



HOME+LAND

BRENTWOOD 18 4 BED - PRIME FACADE

LOT 901 ELEVENTH STREET, AUSTRAL

CUSTOMISE THIS PACKAGE WITH A DIFFERENT DESIGN OR FACADE

PACKAGE PRICE

\$1,152,000

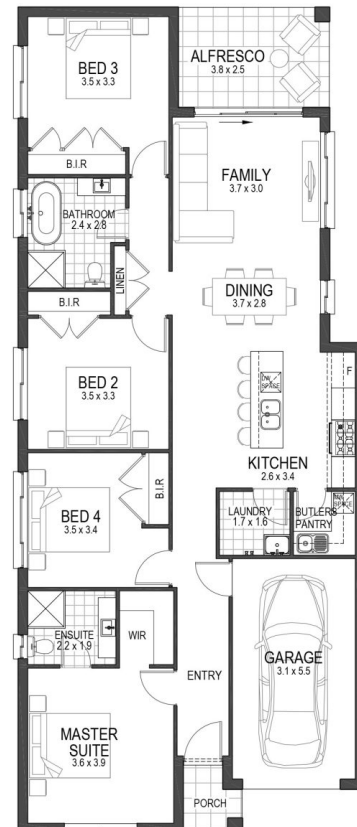
 4
  2
  1
  165.20m²
 300m²

HOME+LAND

FIXED PRICE PACKAGE INCLUSIONS*

- ✓ SOLAR PACKAGE NOW INCLUDED!.
- ✓ Fixed price site costs
- ✓ Fixed base price until anticipated registration date of September 2026
- ✓ Choose your design and facade (subject to lot design)
- ✓ BASIX Package
- ✓ Concrete Driveway
- ✓ Flyscreens to windows
- ✓ Fujitsu ducted airconditioning
- ✓ 2.6m ceiling height to ground floor
- ✓ 20mm stone kitchen bench tops
- ✓ Quality Omega Appliances
- ✓ Free standing bath
- ✓ Semi-frameless shower screens

PLUS much more from our Evolve Luxury Upgrade Package!



Floorplan shown with Universal facade

CONTACT **HOME AND LAND TEAM** ON **1300 446 637**

homeandland@masterton.com.au

*Terms & Conditions: Images in this flyer depict land, landscaping and decorator items which are not supplied by Masterton and are not included in the price. Finishes to facades may show upgraded finishes which may not be included. Site costs may vary according to site classification, survey and site inspection, site conditions including rock and fill subject to building setback. Prices subject to Statutory Consenting Authority approval and specified conditions, bushfire requirements and acoustic report. Inclusions based on Ultimate Inclusions or Evolve Inclusions package unless otherwise specified. Where any item appears in more than one package or offer then the upgrade of that item will be supplied and no credits will be available. Masterton reserves the right to revise plans, specifications and pricing without notice. Please contact a Sales Consultant for more information. All plans and images are subject to copyright protection. The content is correct at time of printing and supersedes all previous versions published. Printed date 09/06/2026. Masterton Homes Pty Ltd - BLIC 35558C ABN 52 002 873 047