

Completed Homes Package



Lot 166, 103 Hirsch Street, Leppington

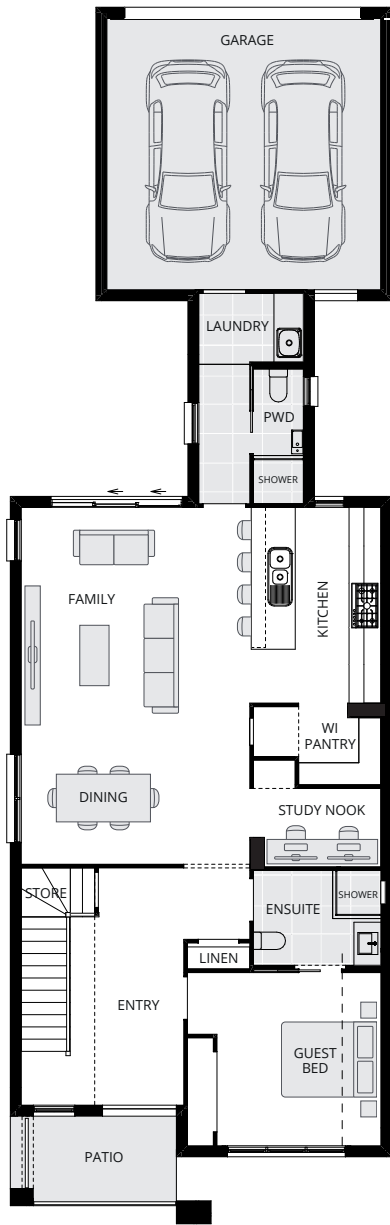
 5  4  2  Land size: 243m²

Inclusions

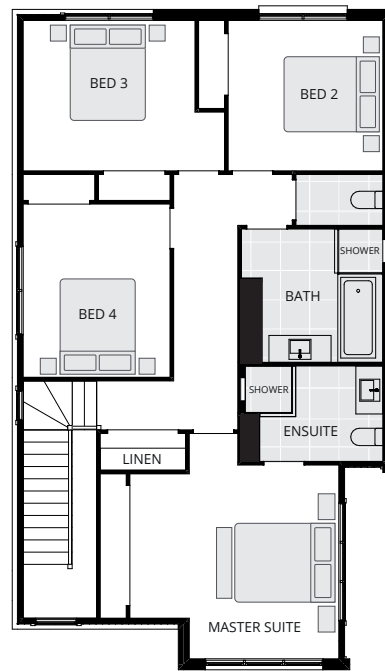
- Supaloc® steel frame with BlueScope 50-year structural warranty*
- McDonald Jones 25 Year Structural Transferable Guarantee
- Superior Kordon termite barrier protection
- Ducted reverse cycle ducted air-conditioning
- Roller blinds to all operatable windows
- Flyscreens to all operatable windows
- Carpet and laminate flooring
- 2550mm high ceilings to ground floor
- White melamine shelving through
- LED downlights
- Sectional overhead garage with automatic opener, including two remotes
- Hume Vaucluse entry door
- COLORBOND® roof
- Sarking to underside of roof
- Energy efficient weather seals and locks to all windows
- Letterbox
- Clothesline
- Concrete driveway
- Kikuyu turf to front and rear yards
- Perimeter fencing and side gate
- 6.6Kw solar system, including 1 × 7Kw electric vehicle charger (as noted on plan)
- Luxury 20mm stone to all kitchen benchtops
- Overhead cupboards with bulkhead
- Splashback tiles
- Soft close drawers
- 900mm Haier electric under bench oven
- 900mm Haier 5-burner gas cooktop
- 900mm Haier slide-out rangehood, including external ducting
- Haier stainless steel microwave
- Haier stainless steel dishwasher with 5-star WELS rating
- Haier 493-litre bottom mount fridge/freezer
- Haier dishwasher
- Base acrylic bath
- Semi-frameless shower screen
- Vanity width polished edge frameless mirror
- Chrome single towel rails
- Chrome toilet roll holders
- European designed laminated vanities with 20mm stone bench tops
- Chrome tapware
- 5-litre trough and cabinet laundry sink with integrated overflow
- Haier 7.5kg front load washing machine
- Haier 6kg vented dryer

Lot 166

 5  4  2  Land size: 243m²



GROUND FLOOR



FIRST FLOOR