



HOME+LAND

PASADENA (CUSTOM) 22/1A OPTION 1 - ADVANCE FACADE

LOT 564 GAWURA ROAD, AUSTRAL

PACKAGE PRICE

\$1,221,000

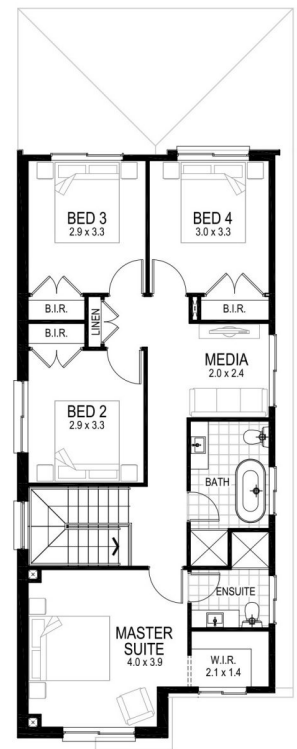
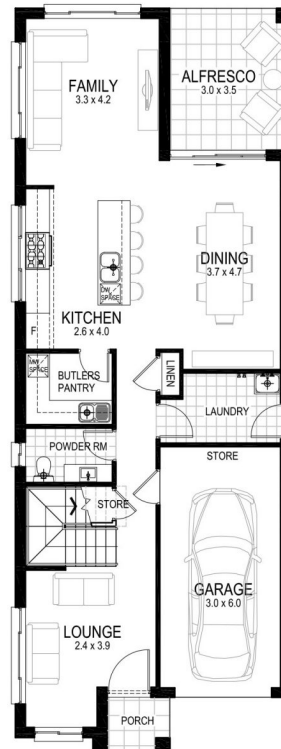
 4
  2.5
  1
  210.60m²
 300m²

HOME+LAND

FIXED PRICE PACKAGE INCLUSIONS*

- ✓ SOLAR PACKAGE NOW INCLUDED!
- ✓ Fixed price site costs
- ✓ Fixed base price until anticipated registration date of June 2026
- ✓ Choose your design and facade (subject to lot design)
- ✓ BASIX Package
- ✓ Concrete Driveway
- ✓ Fujitsu ducted airconditioning
- ✓ 2.6m ceiling height to ground floor
- ✓ 20mm stone kitchen bench tops
- ✓ Quality Omega Appliances
- ✓ Free standing bath
- ✓ Semi-frameless shower screens

**PLUS much more from our
Evolve Luxury Upgrade Package!**



CONTACT **HOME AND LAND TEAM** ON **1300 446 637**

homeandland@masterton.com.au