

# House & Land Package



Lot 357, Eridanus Street, Austral

Package Price

🛏️ 4 🛁 2 🚗 1 📏 311.7m<sup>2</sup>

\$887,000

## Inclusions

- Including our Exclusive Move in Package
- Thermal Comfort with Envirowrap to your H2 Treated Frames
- Colour Concrete Driveway
- External Non-Slip Tiles to Porch, Alfresco and Balcony (If Applicable)
- Quality Designer Carpet to Staircase, all Bedrooms and Leisure
- Designer Ceramic Tiles to Entry, Foyer, w Kitchen, Family and Dining/ Meals
- Quality Reverse Cycle Ducted Air-Conditioning
- Bosch Alarm System including Alarm Control Panel & 3 Sensors
- Insect Mesh Fly Screens to all Opening Windows
- Vertical Blinds to All Clear Glazed Windows & Sliding Doors
- Omega 900mm freestanding Induction Electric Cooktop/Electric Oven
- Omega 900mm Stainless Steel externally ducted canopy rangehood
- Plasterboard Bulkhead to above overhead cupboards
- NBN Basic Setup
- 3000L Slimline Rain water Tank
- Mirror Sliding Doors to Bedroom Robes
- Oyster Lights to each room
- Smooth Transition to Wet Areas
- Illusion Semi-Frameless Shower Screen
- Wall Hung Vanity With Moulded Top
- Stylus Prima II Close Coupled Toilet with Soft Close Seat
- Ducted Exhaust Fans to Main Bathroom, Ensuite, Powder and WC\*
- 1200mm High Tiling to Bathroom, Ensuite, Powder Room and WC\*
- Sarking to Underside of Roof Tiles
- Whirly Birds/Eave Vents to Roof Space
- \*May Exclude some sites, Subject to house design and facade.



AUSTRAL

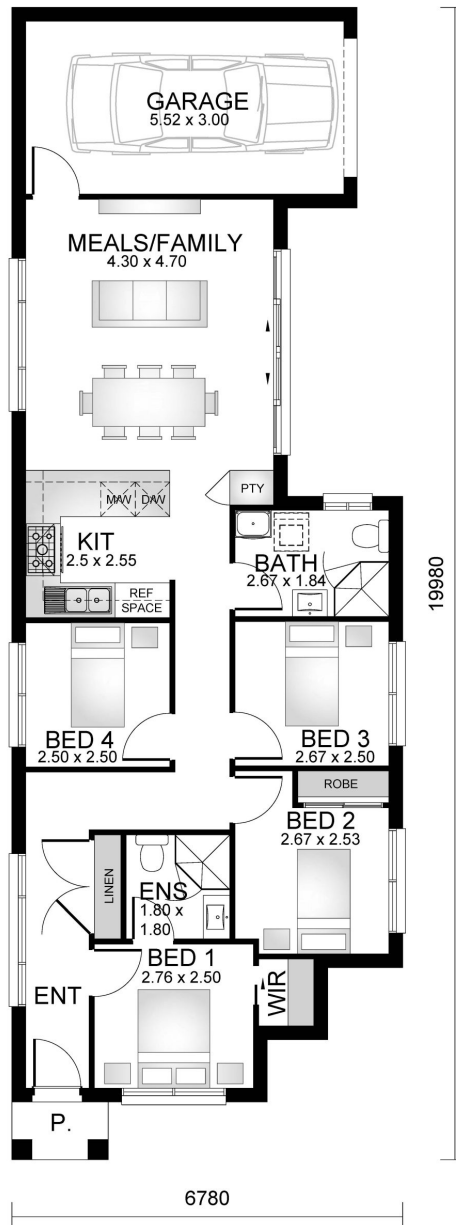
Home. Land. Life.  
[crownlandliving.com.au](http://crownlandliving.com.au)

# Lot 106

 4
  2
  1
  238.30m<sup>2</sup>

Ground Floor	92m <sup>2</sup>
First Floor	0.0m <sup>2</sup>
<b>Total</b>	<b>92m<sup>2</sup></b>

Frontage	6.7m <sup>2</sup>
Balcony	0.0m <sup>2</sup>
Garage	19m <sup>2</sup>
Patio	0.0m <sup>2</sup>
Porch	1.6m <sup>2</sup>



Head Office: 02 9606 8255  
 Leppington Display: 02 9826 5072  
[www.practicalhomes.com.au](http://www.practicalhomes.com.au)

