



Lot 236, Eridanus Street, Austral

Package Price

 4  3  2  265.40m²

\$1,055,000

Inclusions

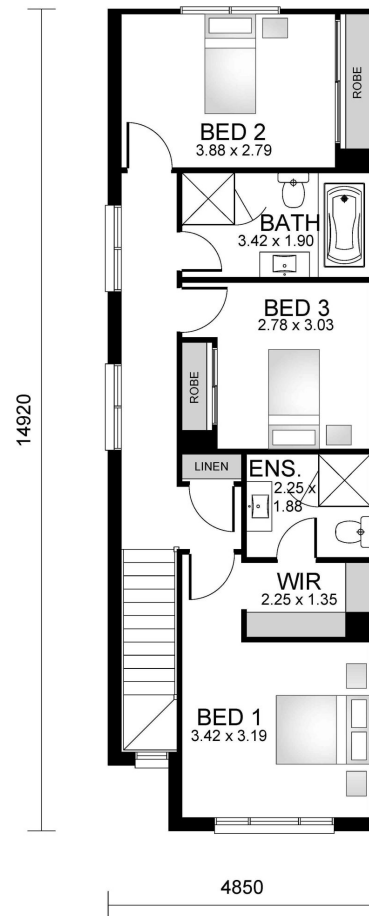
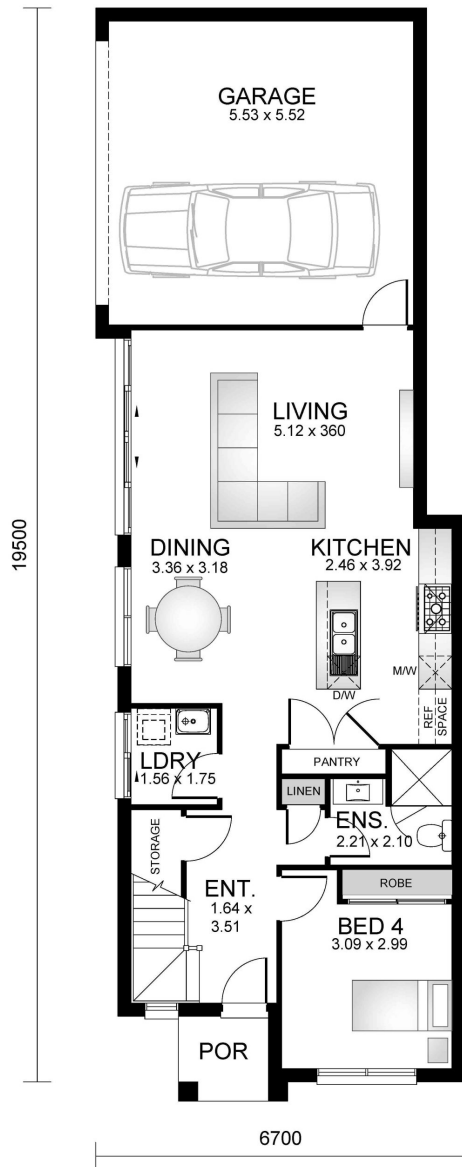
- Including our Exclusive Move in Package
- Thermal Comfort with Envirowrap to your H2 Treated Frames
- Colour Concrete Driveway
- External Non-Slip Tiles to Porch, Alfresco and Balcony (If Applicable)
- Quality Designer Carpet to Staircase, all Bedrooms and Leisure
- Designer Ceramic Tiles to Entry, Foyer, w Kitchen, Family and Dining/ Meals
- Quality Reverse Cycle Ducted Air-Conditioning
- Bosch Alarm System including Alarm Control Panel & 3 Sensors
- Insect Mesh Fly Screens to all Opening Windows
- Vertical Blinds to All Clear Glazed Windows & Sliding Doors
- Omega 900mm freestanding Induction Electric Cooktop/Electric Oven
- Omega 900mm Stainless Steel externally ducted canopy rangehood
- Plasterboard Bulkhead to above overhead cupboards
- NBN Basic Setup
- 3000L Slimline Rain water Tank
- Mirror Sliding Doors to Bedroom Robes
- Oyster Lights to each room
- Smooth Transition to Wet Areas
- Illusion Semi-Frameless Shower Screen
- Wall Hung Vanity With Moulded Top
- Stylus Prima II Close Coupled Toilet with Soft Close Seat
- Ducted Exhaust Fans to Main Bathroom, Ensuite, Powder and WC*
- 1200mm High Tiling to Bathroom, Ensuite, Powder Room and WC*
- Sarking to Underside of Roof Tiles
- Whirly Birds/Eave Vents to Roof Space
- *May Exclude some sites, Subject to house design and facade.

Lot 236

 4
  3
  2
  265.40m²

Ground Floor 80m²
 First Floor 71m²
 Total 151m²

Frontage 4.85m
 Balcony 0.0m²
 Garage 35m²
 Patio 0.0m²
 Porch 2.6m²



Head Office: 02 9606 8255
 Leppington Display: 02 9826 5072
www.practicalhomes.com.au

