

House & Land Package



Lot 651, Twelfth Avenue, Austral

Package Price

🛏️ 5 🛁 3.5 🚗 2 📏 322m²

\$1,209,900

Inclusions

- Carrington 26 Facade
- LIFETIME STRUCTURAL GUARANTEE
- Smart Start Essentials Package
- Site Works Included
- 7 Star Energy Efficiency Compliance
- H1 Concrete Slab
- Up to BAL 12.5 (if required)
- 6kW Solar Power Package
- Electric Vehicle Charging Provision to Garage
- Driveway
- Flooring Package
- Phoenix Tapware
- Gainsborough Door Furniture
- LED Downlight Package to Whole House
- 13kW Ducted Refrigerated Air Conditioning
- Westinghouse 900mm Freestanding Oven and Rangehood
- Niche/Shampoo Wall to each Shower
- Video Intercom System with Touch Button Screen & Doorbell Camera
- Mirror Sliding Doors to all Robes
- AND MUCH MORE!



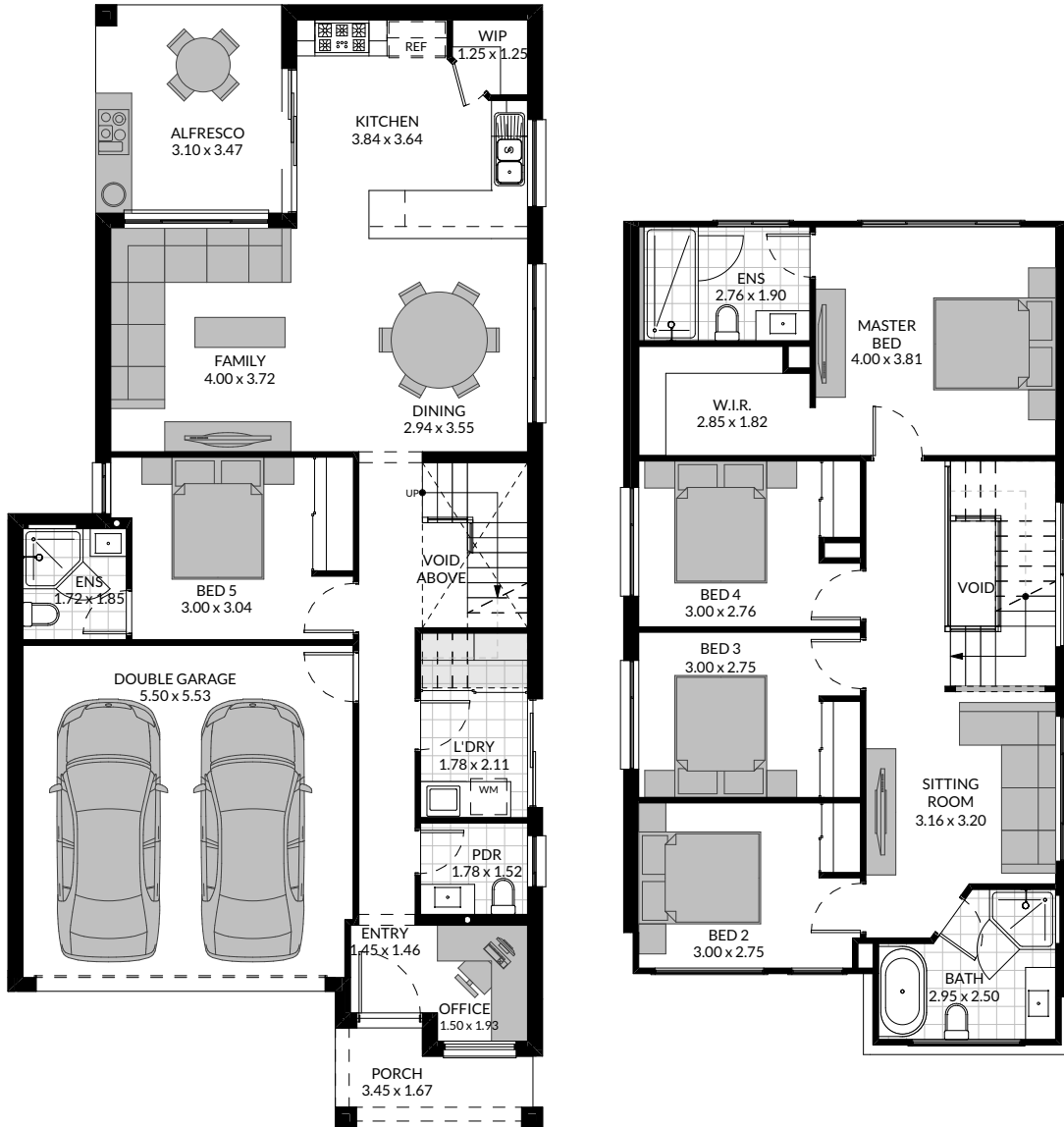
AUSTRAL

Home. Land. Life.
crownlandliving.com.au

Lot 651

 5
  3.5
  2
  322m²

Ground Floor	93.14m ²	Garage	32.92m ²
First Floor	96.79m ²	Porch	4.68m ²
Total	238.29m ²	Alfresco	10.76m ²



Syed Sakib
0424 044 205



Price is correct at time of print only, the builder reserves the right to withdraw this offer at any time without notice before deposit. Images & designs are guides only. This offer & design is subject to certifier and the developers estate guidelines approval of plans. Eaves subject to individual developer & certifier requirements. Planter boxes, feature planting, external works and facade lighting not included. 1.5m max crossfall. The design for this Home & Land Package may have been selected in consultation with the Land Developer. Changes that are deemed by the builder or developer as detrimental to the finished appearance of the facade or the internal layout may not be permitted. See our consultants for more detailed information regarding this package. Price excludes costs of your land conveyancing, lender fees and stamp duty.